



Consider, Discuss, and Take Appropriate Action Regarding Elementary Attendance Boundaries

Board of Trustees' Meeting

March 27, 2023

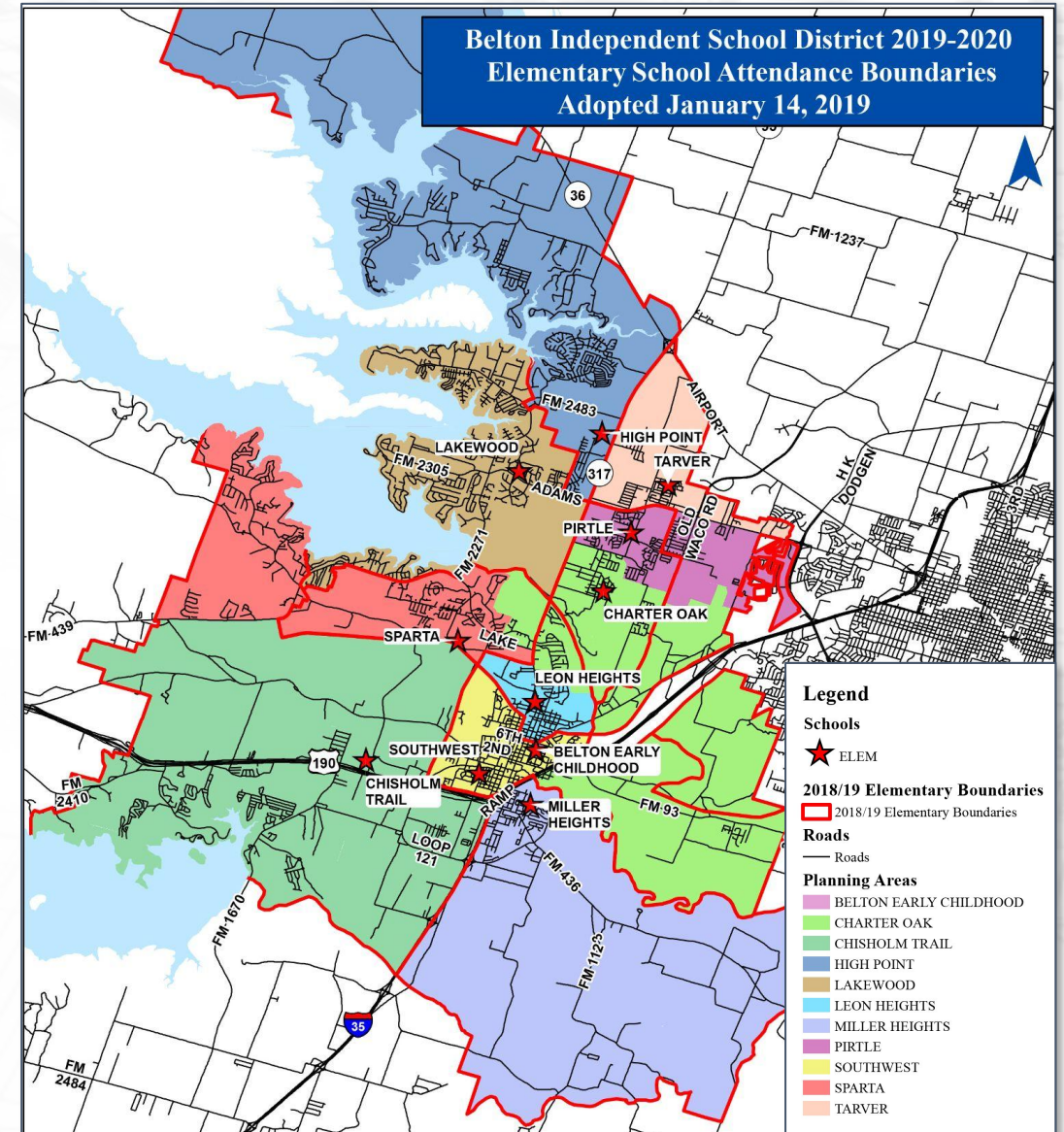


Purpose

Provide the Board of Trustees the District's recommendation for adoption of new elementary attendance boundaries.

Why is Belton ISD updating elementary attendance boundaries?

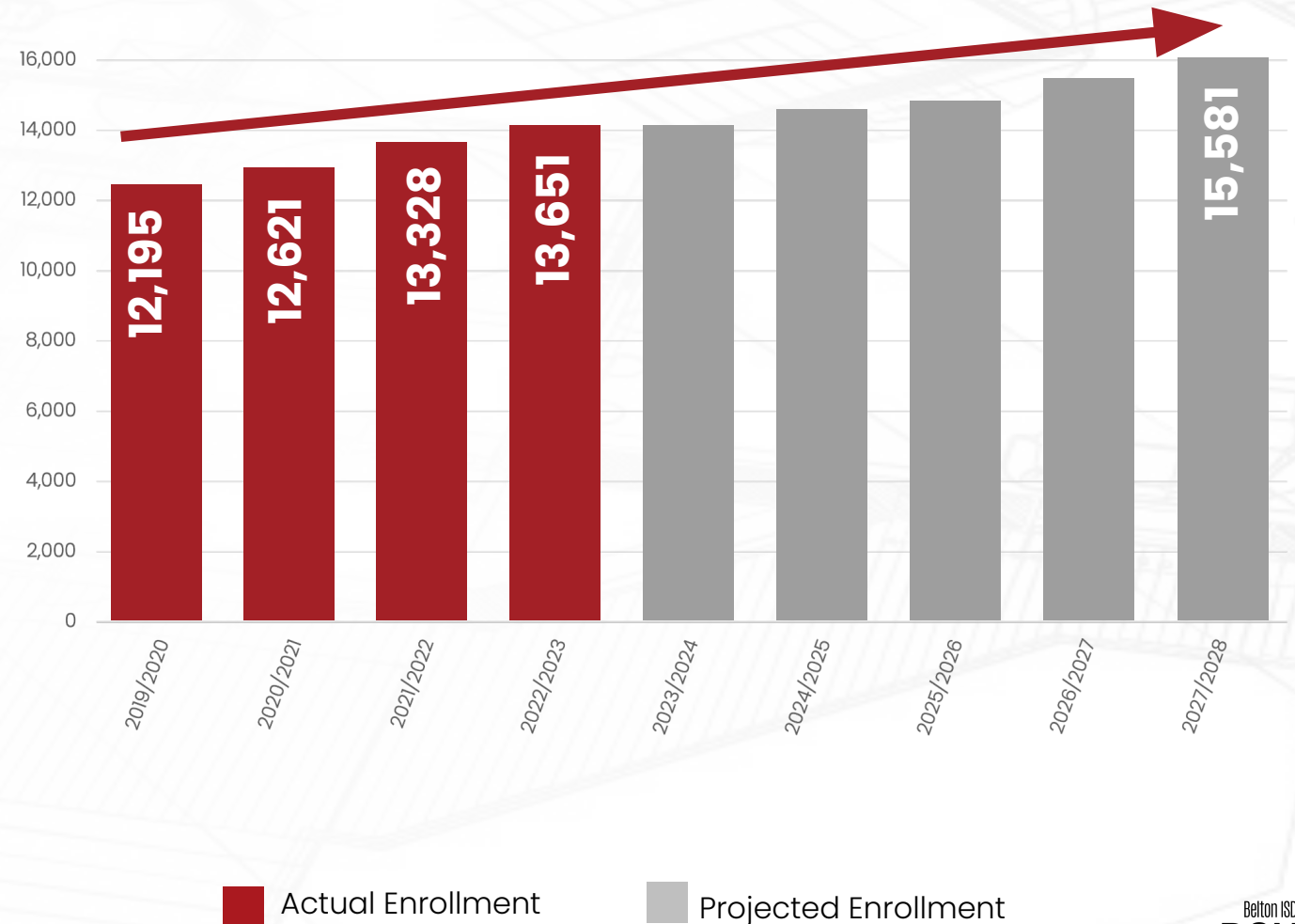
- » Maximize the use of our facilities
- » Manage growth
- » Reduce use of long-term portables



Belton ISD is growing!

+1,500 students
since 2019–2020
school year

Enrollment Projections



*Source: Zonda Education Fall 2022 BISD Demographic Report

2022 Bond Program

- » Expansion of Southwest Elementary
- » Construction of James L. Burrell Elementary
- » Construction of Hubbard Branch Elementary



Increased Elementary Capacity



1,700 new seats

(Hubbard Branch Elementary, Southwest Elementary expansion, and James L. Burrell Elementary)



306 Miller Heights Enrollment

1,394 more student seats

Fewer Portables

Current Total: **25**

After Bond
Implementation: **4**



District Goals



Goal 01:

Strengthen and support the engagement of all stakeholders in pursuit of the BISD vision



Goal 05:

Maximize our use of resources for both current priorities and plans for the future.

Values & Beliefs



Learning Space

We believe well-designed and maintained facilities positively impact student learning and staff efficacy.

Developing our Attendance Boundary Parameters

	AUG22	SEPT22	OCT22	NOV22	DEC22	JAN23	FEB23	MAR23
Attendance Boundary Parameter Process	<p>Consultation with Zonda Education</p> <p>Long Range Facility Planning Team</p>	Districtwide Educational Improvement Council		<p>BISD Board Facilities Committee</p> <p>Parent Thought Exchange</p>	<p>BISD Board Workshop</p> <p>BISD Board Action</p>			
Attendance Boundary Map Proposals Process	Consultation with Zonda Education		Long Range Facility Planning Team with Zonda Education		District Attendance Boundary Planning Team with Zonda Education			<p>Long Range Facility Planning Team</p> <p>Parent, Staff, Community Presentation</p> <p>Community Listening Session Opportunities</p> <p>Board Action</p>

Stakeholder Opportunities

Long-range planning meetings – **3 meetings**

ThoughtExchange – **900 participants**

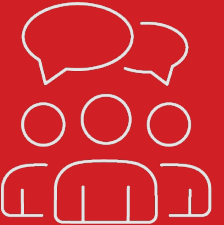
Attendance Boundary Email message – **15,900 opens**

Youtube English views – **915**

Youtube Spanish views – **89**

Feedback submissions – **210**

Listening Session attendees – **Approximately 30**



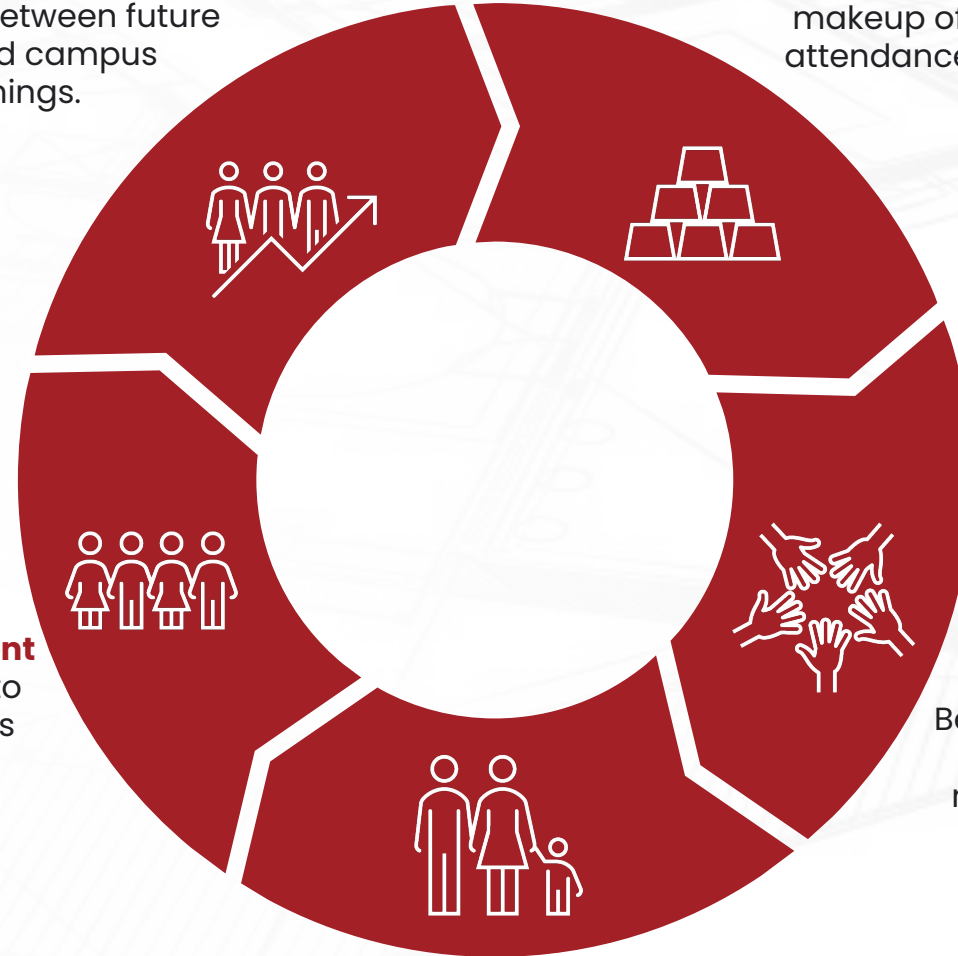
Boundary Parameters: Defined by community and adopted by our Board

1. Growth

Best efforts will be made to plan for future development so that lines do not have to be redrawn between future scheduled campus openings.

2. Socioeconomic Factors

Consideration will be given to the socioeconomic makeup of each attendance zone.



5. Feeder Pattern Alignment

Best efforts will be made to keep students together as they move through elementary, middle, and high school

3. Neighborhood Unity

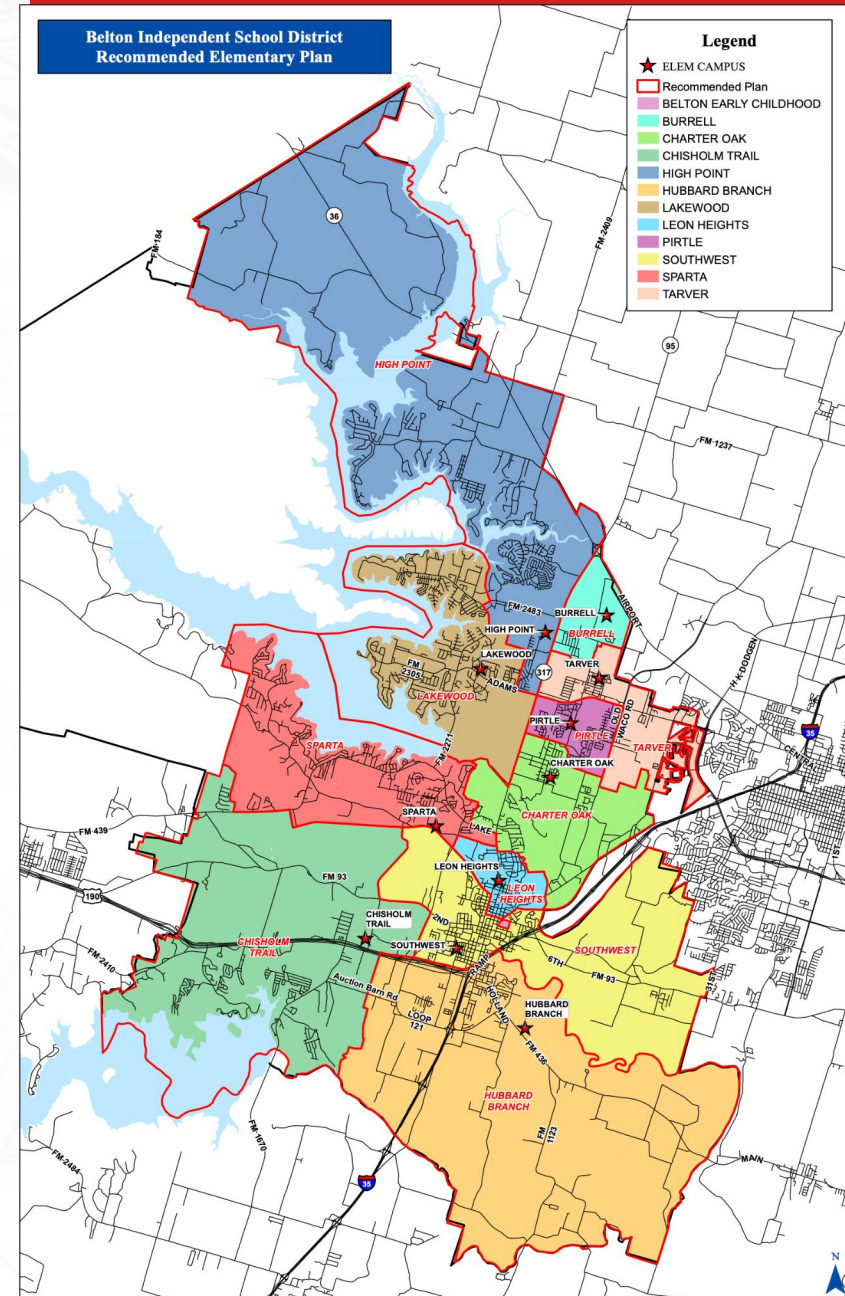
Best efforts will be made to keep subdivisions and neighborhoods together.

4. Family Impact

Best efforts will be made to consider the impact that changing attendance zones will have on families.

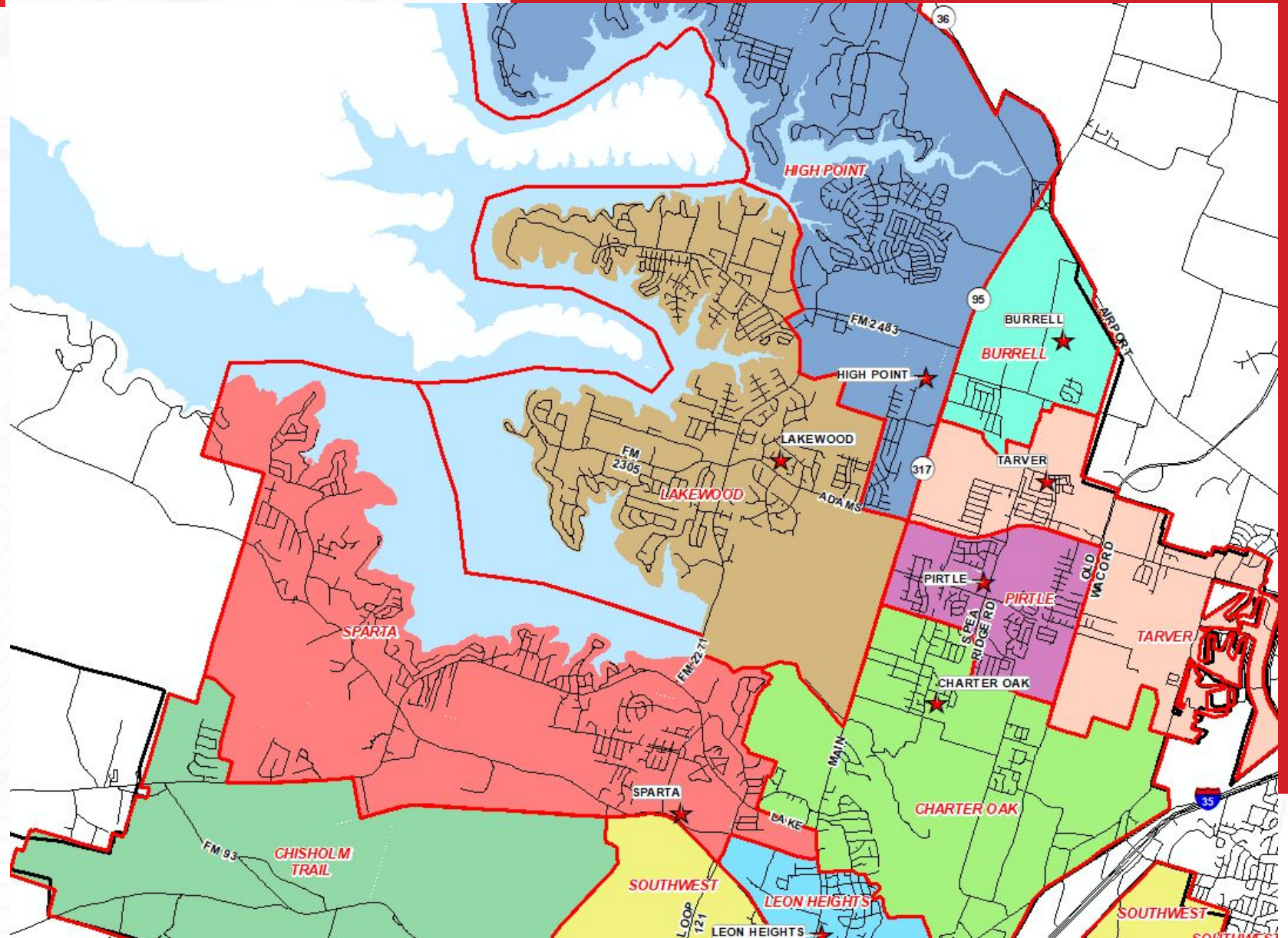
Recommended Attendance Boundary Plan

*Source: Zonda Education



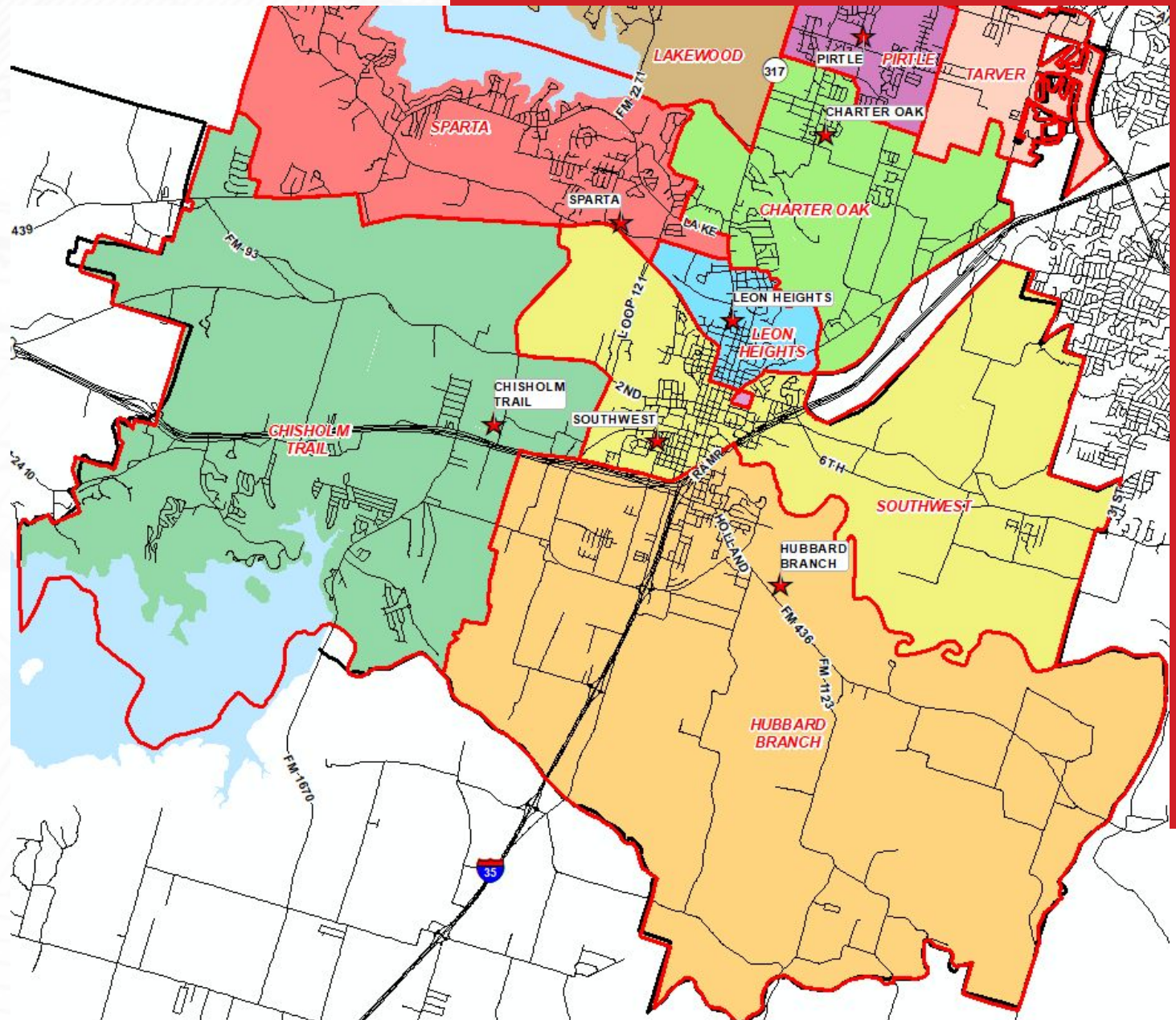
Recommendation - North

- BELTON EARLY CHILDHOOD
- BURRELL
- CHARTER OAK
- CHISHOLM TRAIL
- HIGH POINT
- HUBBARD BRANCH
- LAKEWOOD
- LEON HEIGHTS
- PIRTLE
- SOUTHWEST
- SPARTA
- TARVER



Recommendation - South

- BELTON EARLY CHILDHOOD
- BURRELL
- CHARTER OAK
- CHISHOLM TRAIL
- HIGH POINT
- HUBBARD BRANCH
- LAKEWOOD
- LEON HEIGHTS
- PIRTLE
- SOUTHWEST
- SPARTA
- TARVER



Enrollment Projections: **Elementary Recommendation**

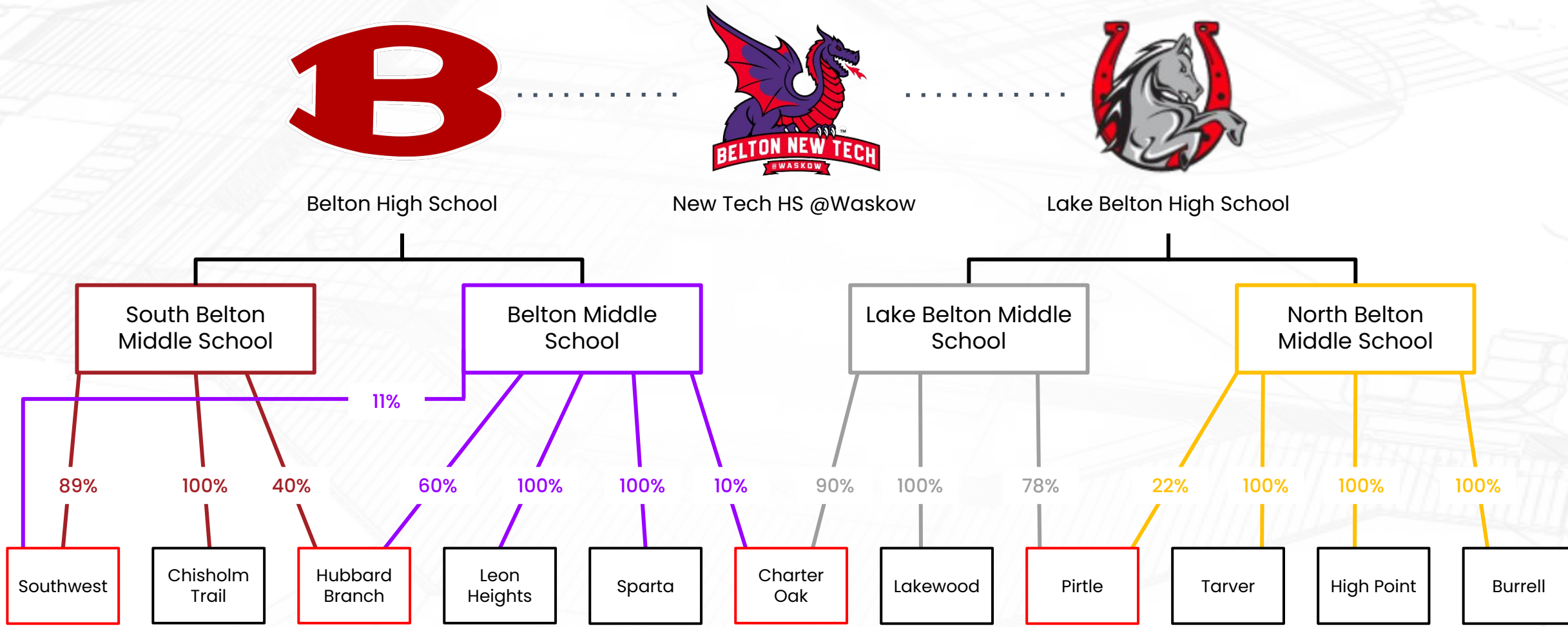
School	Capacity	2023/24	2024/25	2025/26	2026/27	2027/28	2028/29	2029/30	2030/31	2031/32	2032/33
BELTON EARLY CHILDHOOD	628	530	535	540	545	550	544	549	561	569	571
BURRELL	800	393	406	433	478	518	558	585	607	624	653
CHARTER OAK	800	624	667	669	684	688	716	737	756	768	781
CHISHOLM TRAIL	792	694	717	715	715	736	738	746	760	776	786
HIGH POINT	792	639	626	626	617	609	627	633	644	646	650
HUBBARD BRANCH	800	564	598	628	670	712	739	749	773	789	807
LAKEWOOD	792	640	662	677	713	752	782	813	836	860	875
LEON HEIGHTS	265	221	221	219	224	233	237	239	237	239	241
PIRTLE	792	581	588	610	641	660	682	711	740	765	787
SOUTHWEST	540	474	495	494	501	500	497	506	509	511	513
SPARTA	685	646	651	626	619	631	643	656	660	663	664
TARVER	792	494	513	531	538	550	542	531	524	516	514
TOTAL	8,478	6,500	6,679	6,768	6,948	7,139	7,305	7,455	7,607	7,726	7,842

95% – 100% CAPACITY

100%-105 OVER CAPACITY

>105% OVER CAPACITY

Feeder Pattern: Recommended Elementary Plan



Boundary Implementation **Next Steps**

Upcoming communication to families to include:

- » Boundaries take effect for the 2024-2025 school year.
 - » Exception: Burrell Elementary January 2024
- » Circumstances in which a student can remain at their current campus when boundaries go into effect.
- » Transportation services prior to implementation of updated boundaries
- » Next steps for Burrell Elementary opening

Discussion